

NEW JERSEY'S HOME & DESIGN MAGAZINE

# design NJ

APRIL/MAY 2009

## urban chic IN MOUNTAIN LAKES



The right time to rightsize

Nurseries: playful, sophisticated & personal

Plunge into pools

Get Ready for the Stately Homes  
By-the-Sea Show House





WRITER: ROBIN AMSTER  
ARCHITECT: HILAND HALL TURNER ARCHITECTS  
BUILDER: POLO MASTER BUILDERS

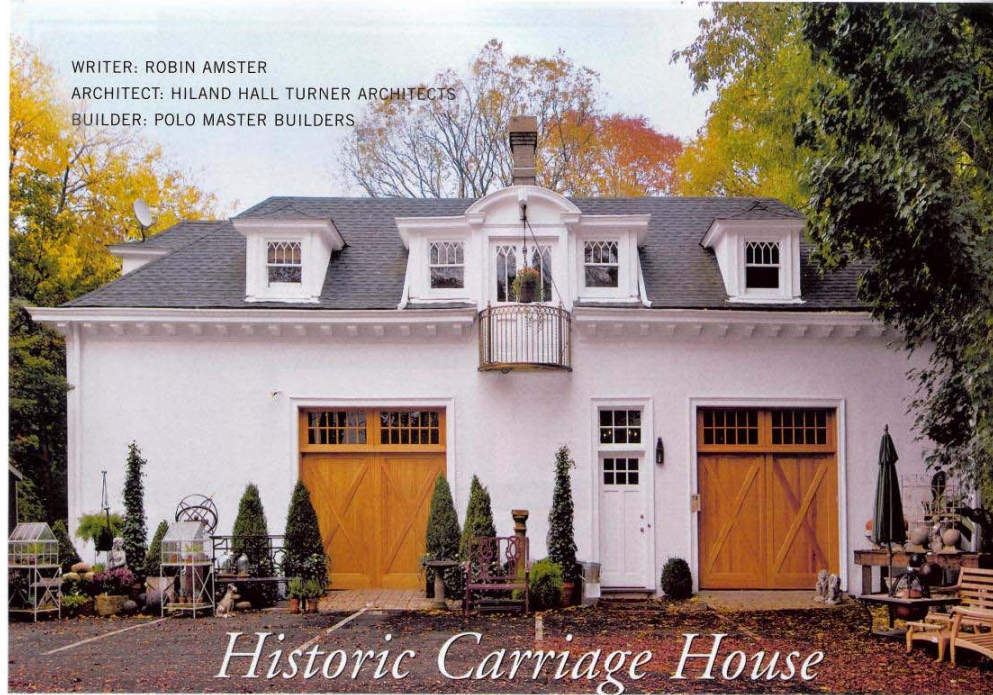


PHOTO BY MARISA PELLEGRINI

## Historic Carriage House goes green

Architect, builder, and designers reveal the beauty of eco-friendly homes

**It seems like green design is on everyone's minds these days. But what does that really mean?**

In the case of the recent Twin Maples Centennial Show House in Summit, it meant the preservation and conversion to a totally green space of the venerable, century-old mansion's carriage house.

The show house, which took place this past fall, raised funds for the Carol G. Simon Cancer Center at Overlook Hospital in Summit and the Twin Maples Historic

Preservation Fund. A host of prominent interior designers showcased their talents at the neo-classic estate, home to show sponsors The Fortnightly Club and the Summit Junior Fortnightly Club.

Seven of those designers joined architect Hiland Hall Turner, AIA, of Hiland Hall Turner Architects in Bernardsville and Roger Polo of Polo Master Builders in Morristown

**Above:** Seven interior designers joined forces with architect Hiland Hall Turner and builder Roger Polo to give the carriage house at the recent Twin Maples Centennial Show House a completely green makeover. **Opposite top left:** Sherrie Legro Round of Enchantment Lives and Kristen Bouterse of Paints Plus designed the foyer with the building's past in mind as a place to stable horses and with the present's focus on sustainable design. A circular theme — evident in the recycled-glass floor mosaic with embedded horseshoes — is a reminder of nature's cycle. The flooring is recycled leather tiles. Grass-cloth wallpaper is complemented by a bamboo ceiling and wooden chandelier. The faux fur-covered bench holds throw pillows of cork and recycled plastic bottles. **Opposite top right:** In the hallway, two wallpapers — bark and leaf-patterns, the latter made of recyclable cellulose paper — are separated by a chair rail crafted from a salvaged leather conveyor belt. Metal rings from a defunct turbine engine adorn the chair rail. The crushed-stone floor is accented by circles composed of indoor-outdoor carpeting, while the lighting fixtures have shades made of rattan and twigs.



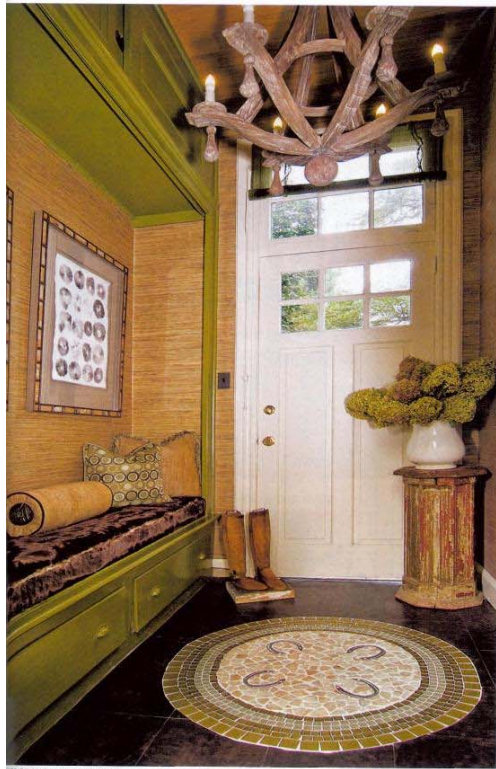


PHOTO BY MARISA PELLEGRINI



PHOTO BY MARISA PELLEGRINI

**Bottom, left and right:** Peter Salerno of Peter Salerno Inc. designed the kitchen with natural materials and sleek Energy Star-rated appliances. The flooring is reclaimed white oak from a West Virginia barn through Shehadi Rugs & Carpet. So too is the breakfast bar designed by Roger Polo of Polo Master Builders. The cabinetry has plywood interiors and formaldehyde-free solid cherry faces. The countertops, farm sink, and accent drawer faces are concrete, while the backsplash is slate. Among the appliances is a Miele dishwasher that uses one-third the water of a conventional dishwasher and a Fagor oven that goes from room temperature to cooking temperature (400 degrees) in less than five minutes.



PHOTO BY MARISA PELLEGRINI

